

Welcome!

**Central Los Angeles Area
Projects Update Meeting**
February 11, 2025

Housekeeping

Today's meeting is being recorded.



Attendee cameras are turned off and microphones are muted.



During the meeting, questions and comments can be submitted using the Q&A icon.



For technical support, call or text 213.276.6008

Code of Conduct

Metro is committed to ensuring that all participants can fairly and clearly share ideas, comments and concerns about this project. To provide a safe and equitable process, we are asking for your help.

During this meeting, please:

1. Respect the format of the meeting and allow everyone an opportunity to comment
2. Treat fellow community members, agency representatives, Metro staff and others with respect



Welcome and Agenda

Thank you for joining us!

Metro Agency Updates (Olga Arroyo)

Central LA Construction Project Team (Olga Arroyo)

Link Union Station – Early Work Activities (Raul Preciado)

Division 20 Portal Widening and Turnback Facility Project (Ned Racine)





- **Metro's Response to Wildfires:** In response to the Eaton and Pacific Palisades wildfires, LA Metro has adjusted the eligibility for reduced fare programs to support the victims.
- **Immediate Benefits:** Affected individuals will receive a 90-day free transit pass, preloaded on a TAP card, for unlimited rides on participating transit systems in L.A. County.
- **Ongoing Support:** After 90 days, wildfire victims can get 20 free regional rides each month for six months, with fare-capping options after exceeding certain ride limits.
- **Enrollment Information:** Victims can enroll online or at designated resource centers across Los Angeles. Specific dates and locations are provided for immediate assistance.
- **Contact for Assistance:** <https://www.taptogo.net/wildfirerresponse>



Facebook Groups: Metro Central



Join the conversation on the Central Area Facebook Group by visiting:
www.facebook.com/groups/metrocentral/.



Central Los Angeles Area Team

Our Mission: *To serve the riders and stakeholders in LA County who use our system, or engage with Metro as it plans, builds and operates a world-class transportation system.*

Centralized
communications
approach with the
community

Core community
relations team

Serve as a conduit
of community
priorities within
Metro

Oversee outreach
programs for
Metro projects in
construction



Central Los Angeles Team

Construction Relations and Mitigation Programs

- Olga Arroyo, Community Relations Director
- Raul Preciado Rivera, Principal Community Relations Officer
- Ned Racine, Principal Community Relations Officer

New Media

- Wendy Cardona, Community Relations Manager
- Robyn Lopez, Principal Community Relations Officer

Link Union Station



Meet the Metro Team

Environmental Study Phase

Program Management

Carlos Montez

Community Relations

Danielle Valentino

Design and Construction (Phase A)

Program Management

Scott McConnell

Alice Hsu

Construction Relations

Olga Arroyo

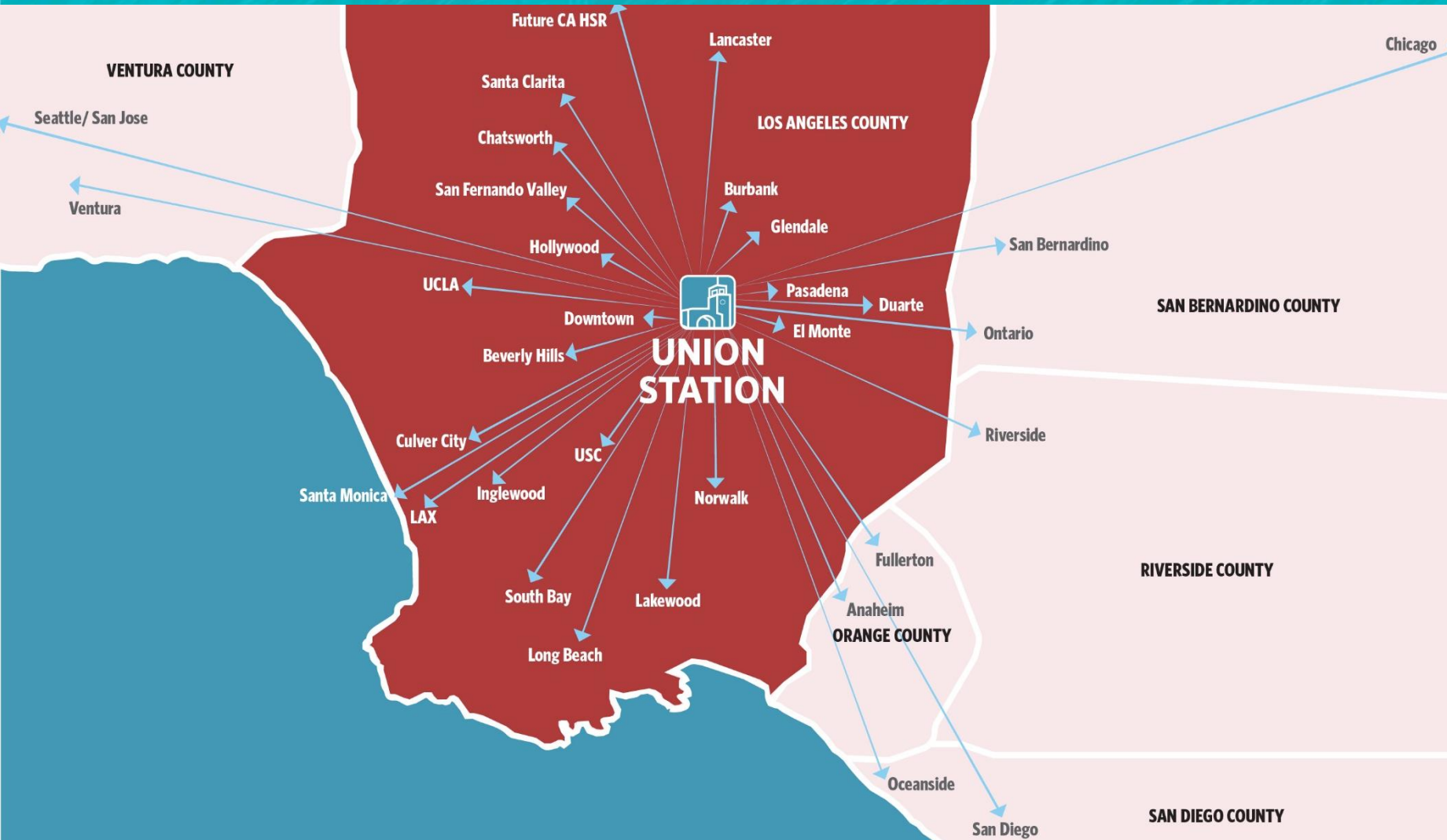
Raul Preciado

Art & Design

Mayen Alcantara



Union Station and Future Rail Expansion



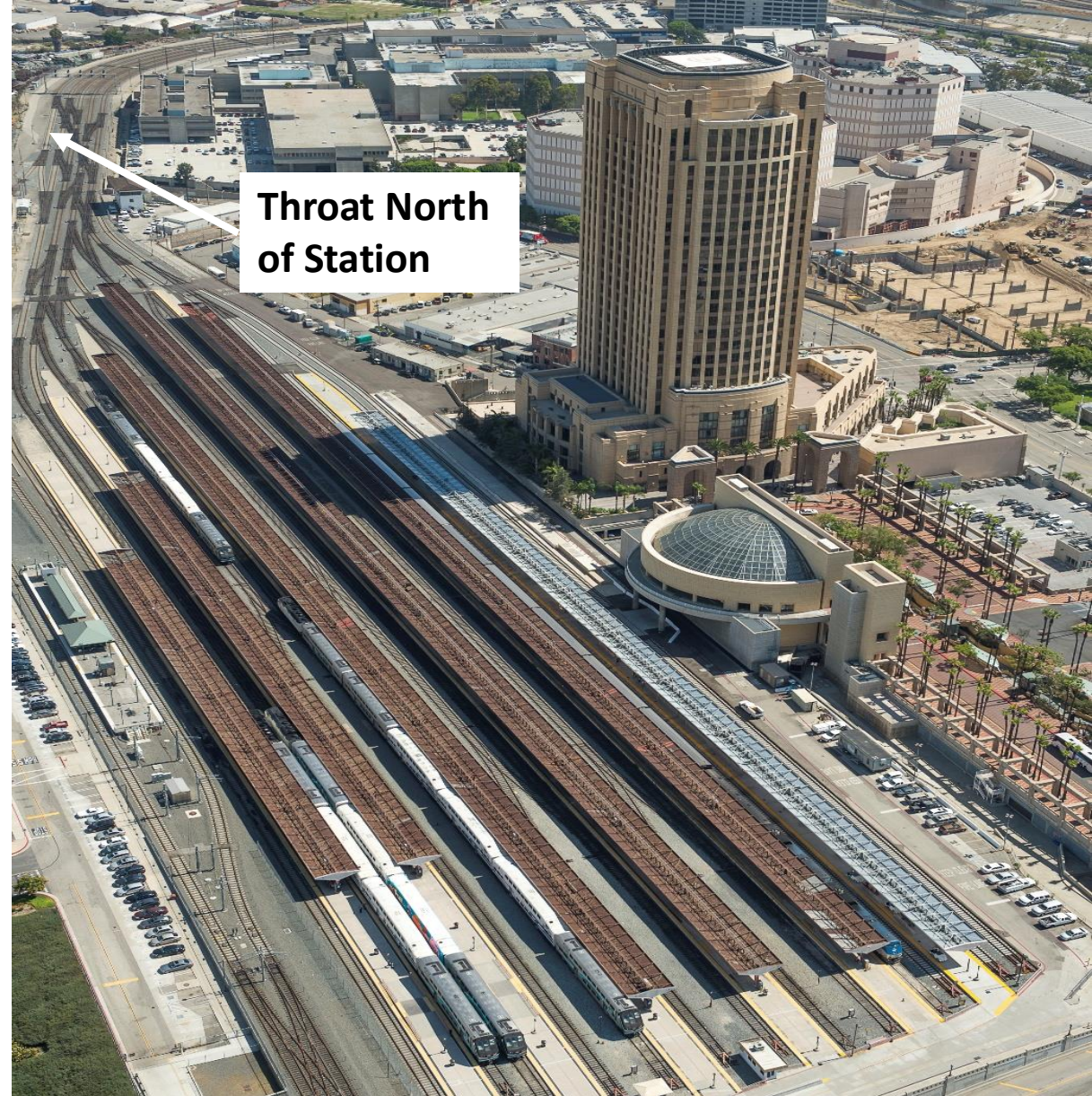
Future Rail Expansion and Increased Rail Service

- > Metrolink
- > LOSSAN
- > Amtrak
- > California High Speed Rail
- > Brightline

Los Angeles Union Station is the largest multi-modal hub in Southern California with commuter and intercity rail services across all six counties in SoCal and Amtrak rail service to Seattle, Chicago, New Orleans and beyond.



Stub-ended tracks



**Throat North
of Station**

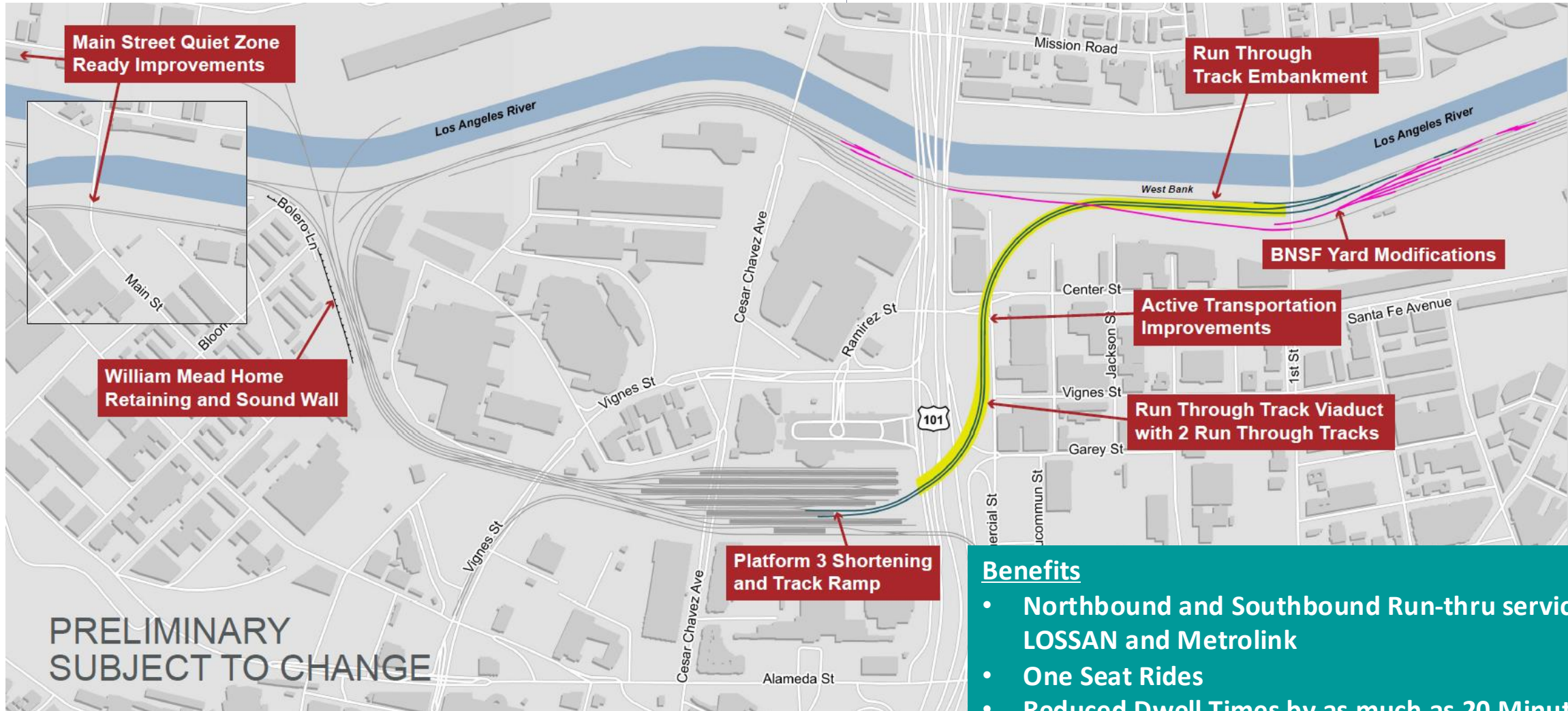
Los Angeles Union Station Today

Built in 1939 | Union Station is a stub end station and has not been modernized since it was built

Link US – Proposed Run-thru Structure



Link US – Phase A

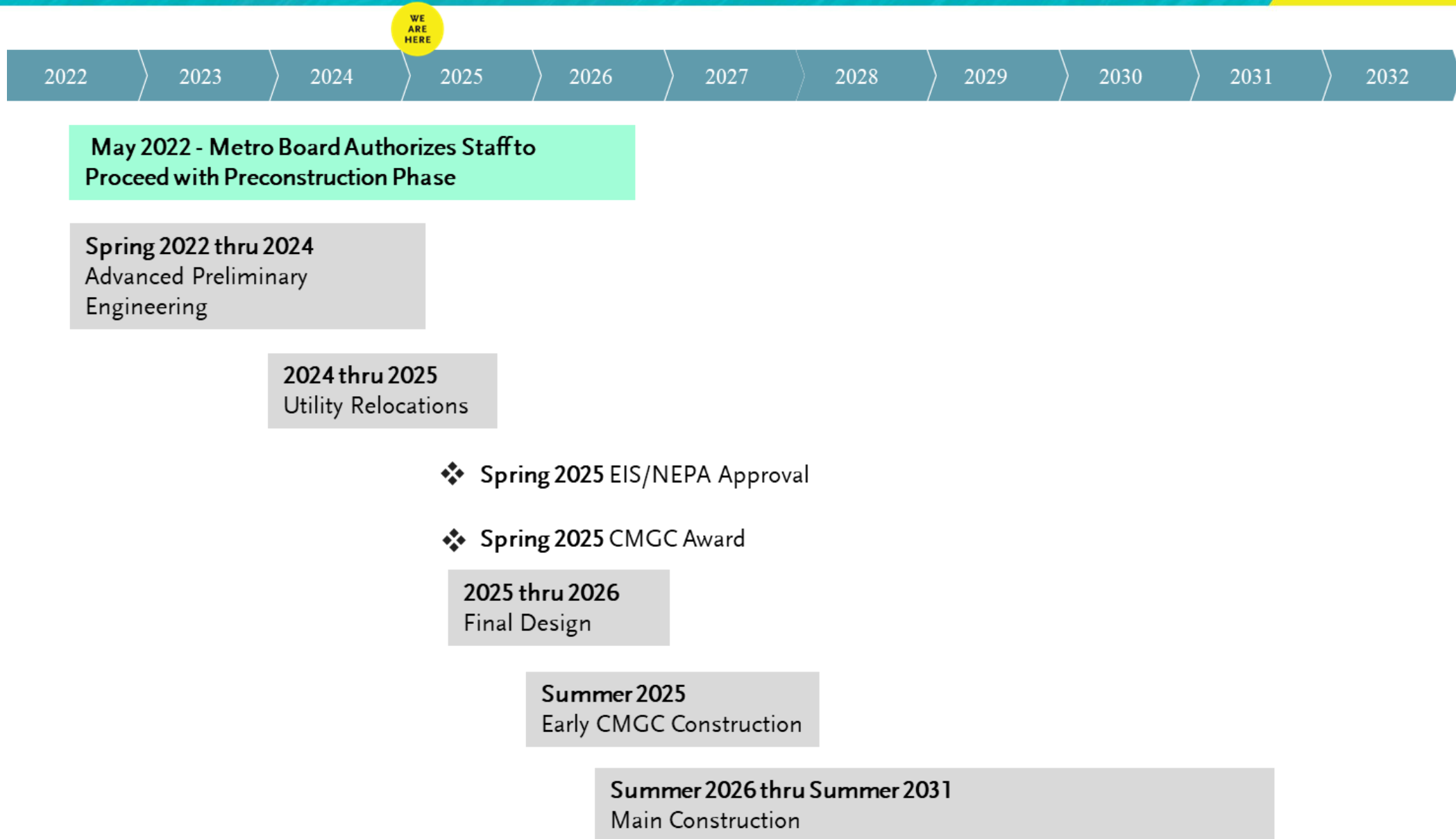


Benefits

- Northbound and Southbound Run-thru service for LOSSAN and Metrolink
- One Seat Rides
- Reduced Dwell Times by as much as 20 Minutes
- Increased Rail Capacity
- Accommodates future California High Speed Rail



Link US – Project Schedule



Early Work Activities - Look Ahead Schedule

Activity	Duration Work Hours Location	Access
Utility services adjustments and cable pulling	<ul style="list-style-type: none">> Cable pulling and overhead removal by telecom operators and DWP scheduled for Q1-Q2 2025> Daytime: 9am-5:00pm Mon-Fri,> Intermittent> Along Commercial St between Vignes St past Center St.	<ul style="list-style-type: none">> Local access, driveway and pedestrian access maintained> Crews will set up equipment at manholes only, maintaining access to thru traffic



Building Demolition

Activity	Duration Work Hours Location	What to expect
Life Storage Building Demolition	<ul style="list-style-type: none">• Work began in early January 2025 and will be ongoing for approximately 6 months• Located at Commercial St and Center St intersection	<ul style="list-style-type: none">• Two-way vehicular access will be maintained on Commercial St during construction• Pedestrian access will be maintained along Commercial St outside the construction limits• Full closure of Old Center St, from Aliso St to Commercial St• Full closure of Aliso St, from Old Center St to approximately 50' west of the alley• Parking lane closure on the north side of Commercial St, in front of the storage building• Gated access points to the construction area will be in place



Early Work Activities – Utility Relocations (Thru 2025)



Link US – Near Term Activities



- > Two-way vehicular access will be maintained during construction
- > Pedestrian access will be maintained

Near Term Activities – Life Storage Demolition (Thru 2025)



Near Term Activities – Life Storage Demolition (Thru 2025)



Before Demolition



During Demolition (Feb 2025)

Link US – Public Outreach Tools

- > Construction notice published on project's website: metro.net/linkus
- > Notice of work distribution to surrounding construction area
- > Coordination with adjacent stakeholders and construction projects
- > Outreach to local elected official offices and community organizations in the Arts District and Little Tokyo including
 - Business Association/Improvement Districts
 - Advocacy and civic advisory bodies



Thank You – Stay Informed



213.922.2524



LinkUnionStation@metro.net



www.metro.net/linkus



Next stop: improving rail service.

DIVISION 20 PORTAL WIDENING AND TURNBACK FACILITY

Construction Update



Metro

Meet the Team

Project Management:

- Albert Soliz

Community Relations:

- Ned Racine

Design-Builder:

- Tutor Perini Corporation



Project Overview

- > Anticipated opening: 2026
- > Improvements to Metro's Division 20 Rail Yard will provide faster and more frequent service on the Metro B and D lines
- > Improvements include
 - Widening of heavy rail portal
 - New turnback facility
 - Expansion, reconfiguration of rail storage tracks

Division 20 Portal Widening & Turnback Facility



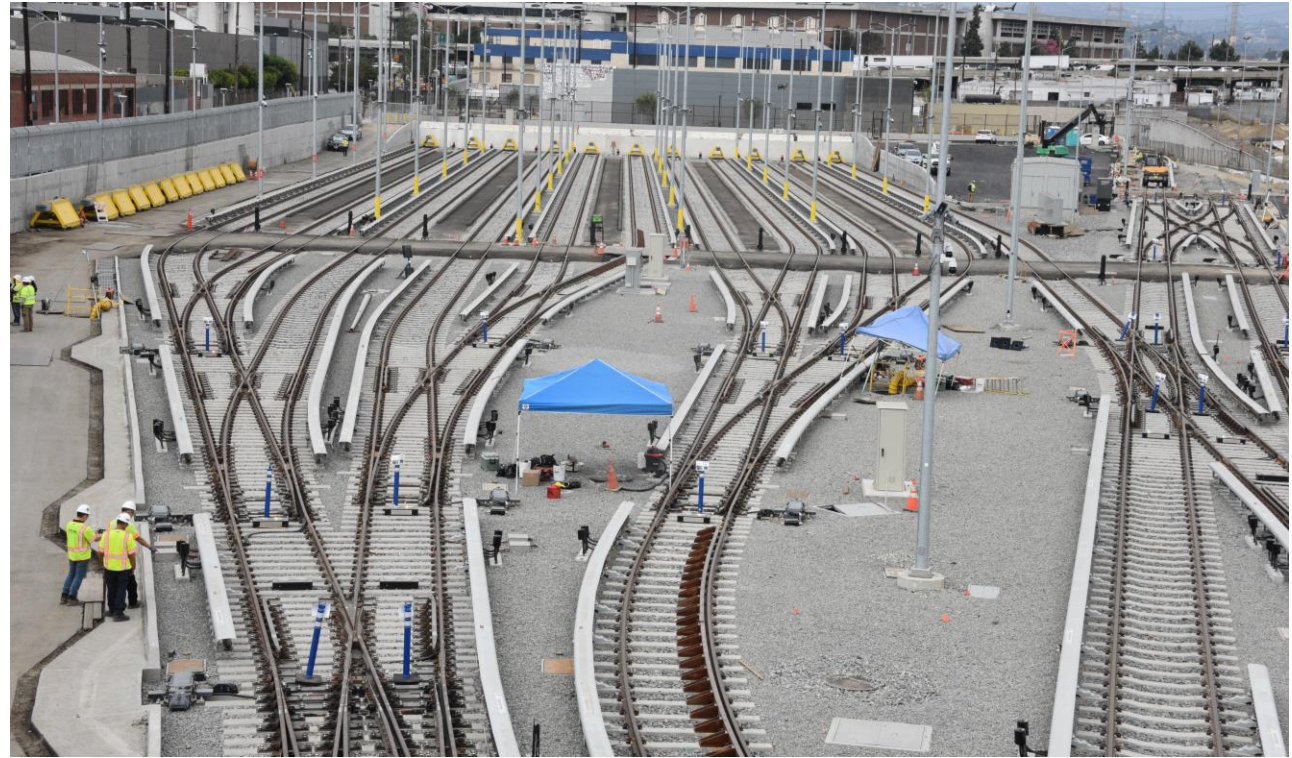
Exact location of turnback tracks and storage tracks to be determined.

Current Work: North Yard

Adding and moving utilities supports additional tracks for more rail car storage.

These utilities include:

- > Fire water lines
- > Lighting duct banks
- > Main storm drain
- > Retaining wall near Commercial St



North Yard looking north

Current Work: Portal Area

Portal Widening

Once the portal is expanded from two to four tracks, the turnaround time for subway cars from the rail yard to Union Station will shrink.

The portal demolition began November 2022. When workers complete the western portal, they will switch to the east portal closer to Los Angeles River.



West portal. Blanket protects from flying objects during demolition

Current Work: Portal Area



Current Work: Train Control for New Rail

Looking southeast, train signals have been installed in north yard.



Current Work: Nonconducting Fencing

In the south yard, workers have installed 210 feet of nonconducting (fiberglass) fence near electrical buildings.



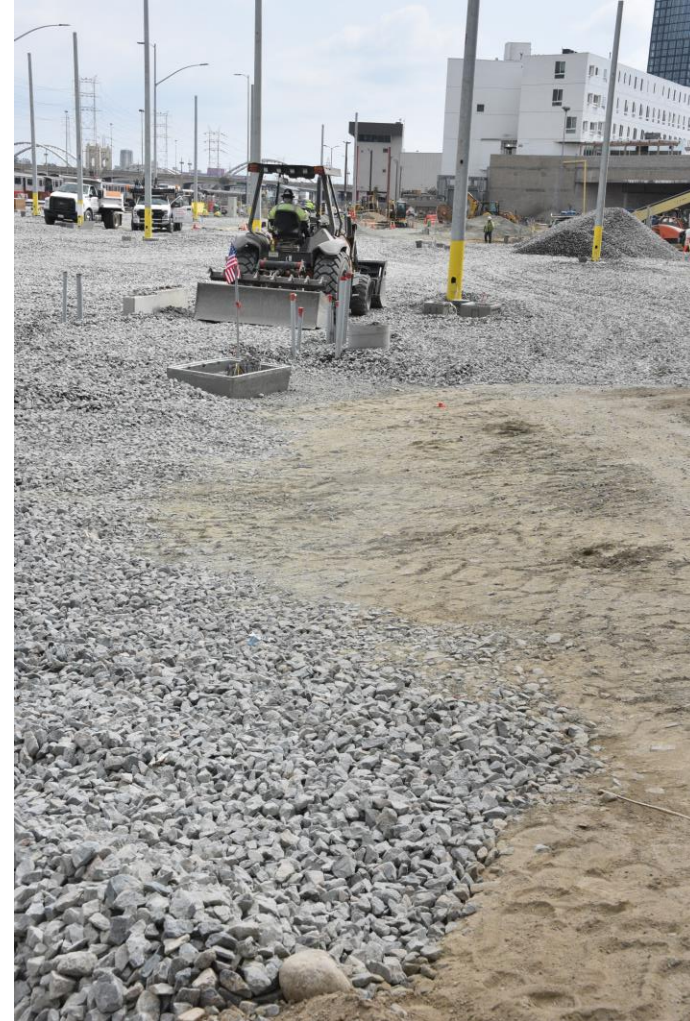
Current Work: Preparing the South Yard

Before



Storm drain segments buried in the south yard.

Current

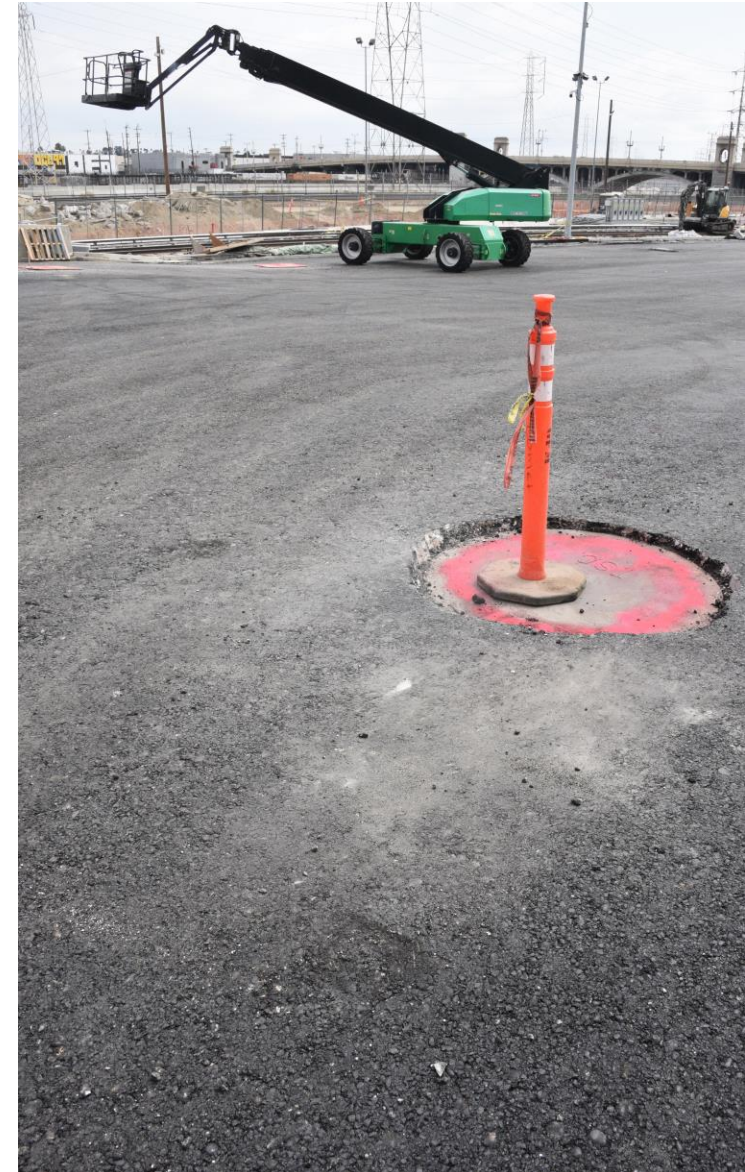


Upcoming Work

**Work is subject to change*

- > Demolish portal walls and tracks
- > Upgrade train communication systems
- > Complete portal foundation and walls
- > Install track and contact rails

Workers have paved a chunk of the north yard for easier access.



Construction Mitigations

Best practices on the Division 20 construction site

- > Equipment and staging areas shall be located away from noise-sensitive receivers, and noise barriers should be used when possible.
- > Minimize use of high-impact devices such as jackhammers and hoe rams.
- > Utilize lower impact devices such as concrete crushers and pavement saws.
- > Refrain from idling equipment.
- > Use frequent watering to reduce dust.



Watering truck east of One Santa Fe reduces dust.



Workers monitor noise as excavation in the south yard continues.

Stay Connected



213.922.6934



div20portalwidening@metro.net



metro.net/divison20

THANK YOU

Stay in Touch

Our next meeting:

Tuesday, May 27, 2024, at 12pm, Virtual

Zoom: <https://us02web.zoom.us/j/91456407320>

Webinar ID: 914 5640 7320



213-922-1111



centrallaprojects@metro.net